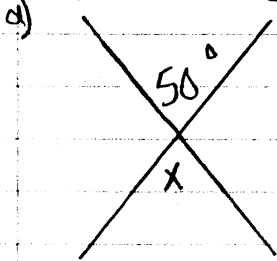


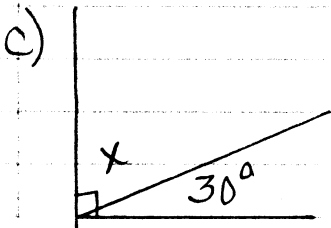
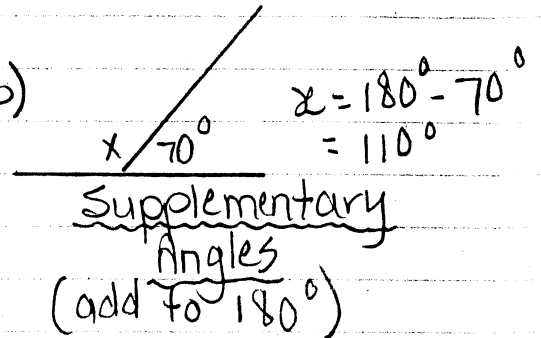
Geometry Review Sheet

Dec 2/13

① Special Angles



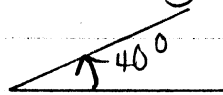
$x = 50^\circ$ opposite angles (equal)



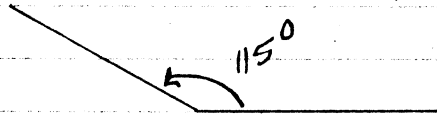
$$x = 90^\circ - 30^\circ = 60^\circ$$

Complementary Angles
(add to 90°)

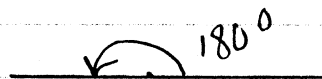
d) Acute angle \rightarrow less than 90°



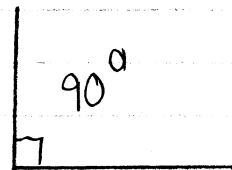
e) Obtuse Angle \rightarrow greater than 90° less than 180°



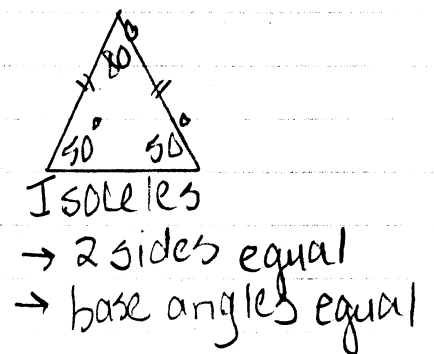
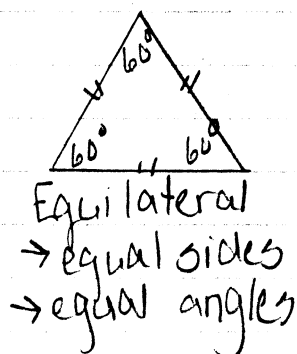
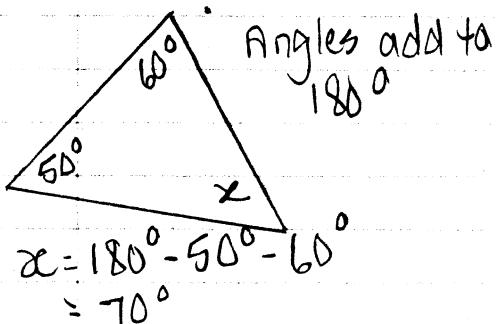
f) Straight Angle $\rightarrow 180^\circ$



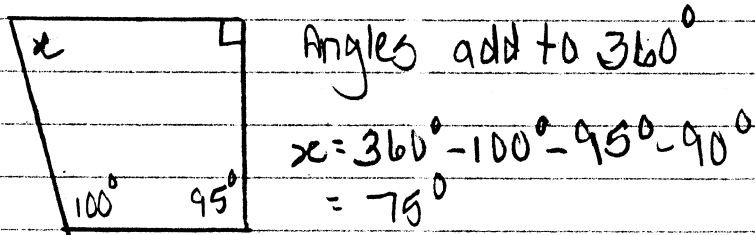
g) Right Angle



② Triangles

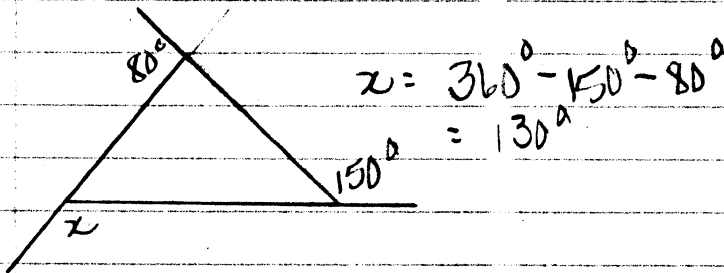


③ Quadrilaterals → 4 sides



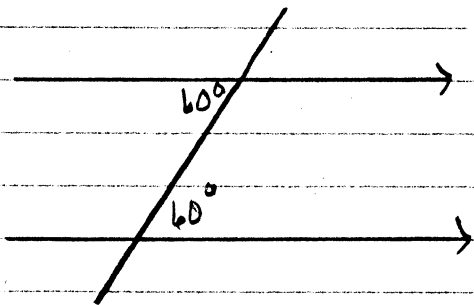
④ Exterior Angles of a Polygon

→ add to 360°

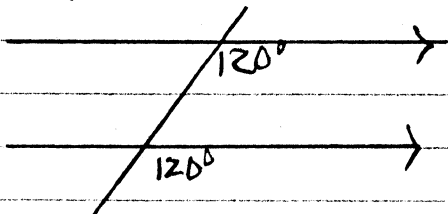


⑤ Parallel Lines

"Z" Pattern



"F" Pattern



"C" Pattern → add to 180°

