

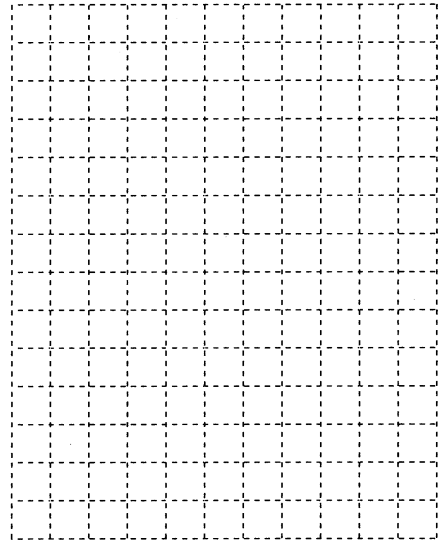
Name: _____

1. Matt places an advertisement in the newspaper.
There is a fixed cost of \$100 to place the advertisement and a charge of \$25 per day.

a) Complete the table of values.

Number of Days	Cost (\$)
0	
1	
2	
3	
4	

b) Draw and properly label the graph.



c) State the slope of the line **with units**. _____

d) State the y-intercept **with units**. _____

e) What type of variation is this? _____

2. Shannon earns \$15/hour.

a) State the slope **with units**. _____

b) State the y-intercept **with units**. _____

c) Write an equation to represent **E**, her earnings in dollars after **h**, hours. _____

d) What type of variation is this? _____

e) Use your equation to find how much she earns for 37 hours of work.

3. The cost to take a taxi is determined according the formula, $C = 1.25d + 3.50$, where C is the cost in dollars and d is the distance driven in km.

a) State the slope **with units**.

b) What does the slope represent in words?

c) State the y-intercept **with units**.

d) What does the y-intercept represent in words?

e) Sketch a graph using slope and y-intercept. *Label fully, as done in class.*

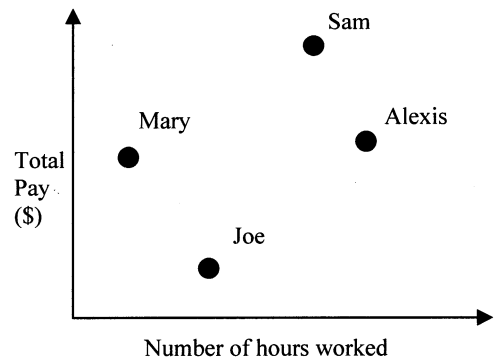


4. The graph on the right shows the number of hours worked and the total pay of four employees at a restaurant.

Based on the graph,

a) who had the lowest pay? _____

b) who worked the most hours? _____

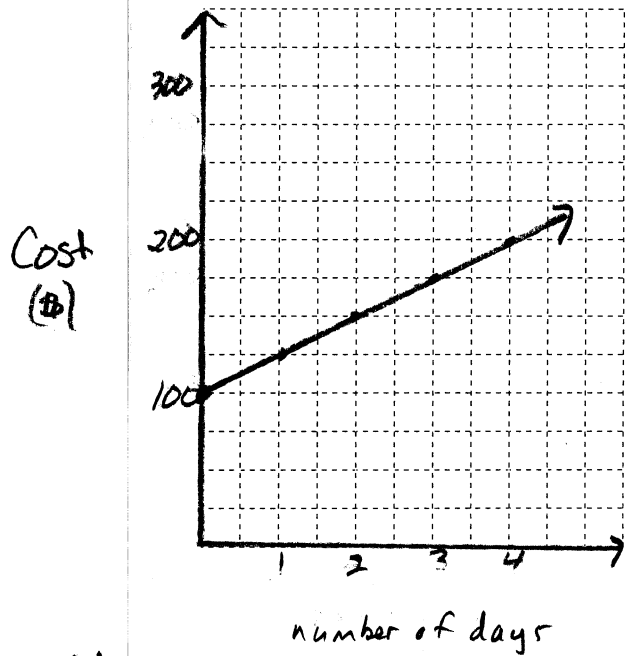


1. Matt places an advertisement in the newspaper.
 There is a fixed cost of \$100 to place the advertisement and a charge of \$25 per day.

a) Complete the table of values.

Number of Days	Cost (\$)
0	100
1	125
2	150
3	175
4	200

b) Draw and properly label the graph.



c) State the slope of the line **with units**. \$25/day

d) State the y-intercept **with units**. \$100

e) What type of variation is this? Partial

2. Shannon earns \$15/hour.

a) State the slope **with units**. \$15/hour

b) State the y-intercept **with units**. \$0

c) Write an equation to represent E, her earnings in dollars after h, hours. E = 15h

d) What type of variation is this? Direct

e) Use your equation to find how much she earns for 37 hours of work.

$$\begin{aligned}
 E &= 15h \\
 &= 15(37) \\
 &= 555 \\
 \text{She earns } &\$555
 \end{aligned}$$

3. The cost to take a taxi is determined according the formula, $C = 1.25d + 3.50$, where C is the cost in dollars and d is the distance driven in km.

b) State the slope **with units**.

\$ 1.25 / km

c) What does the slope represent in words?

The cost per km

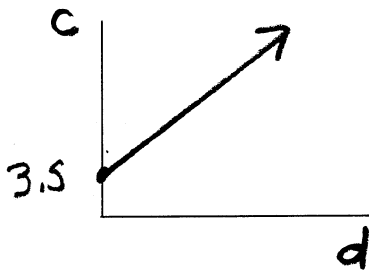
d) State the y-intercept **with units**.

\$ 3.50

e) What does the y-intercept represent in words?

Starting cost to take the taxi

f) Sketch a graph using slope and y-intercept. *Label fully, as done in class.*



4. The graph on the right shows the number of hours worked and the total pay of four employees at a restaurant.

Based on the graph,

a) who had the lowest pay?

Joe

b) who worked the most hours?

Alexis

