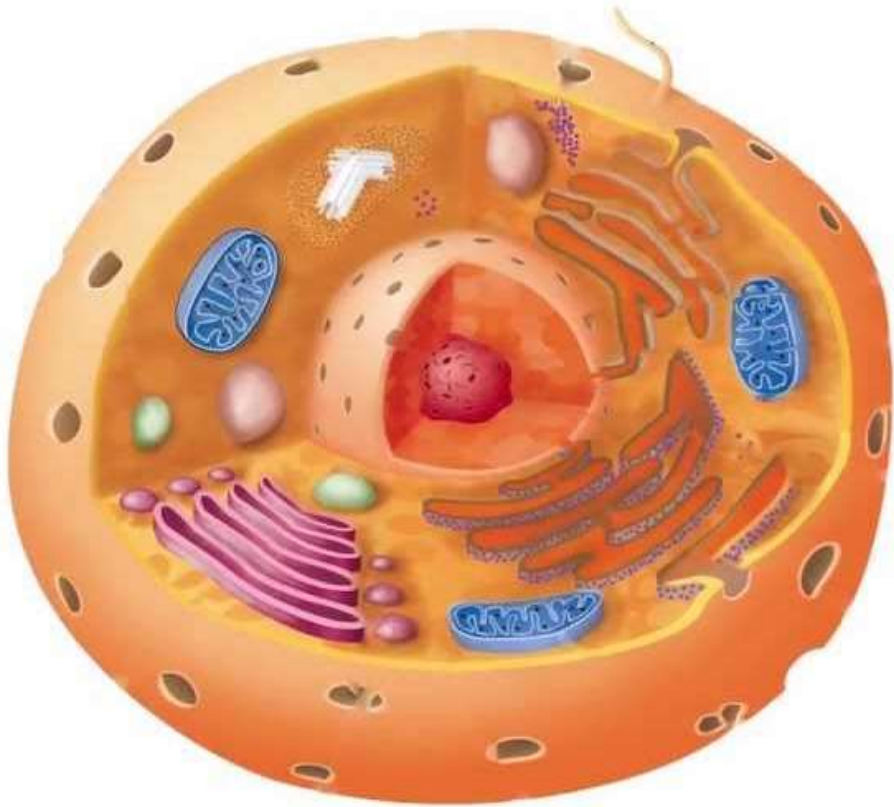
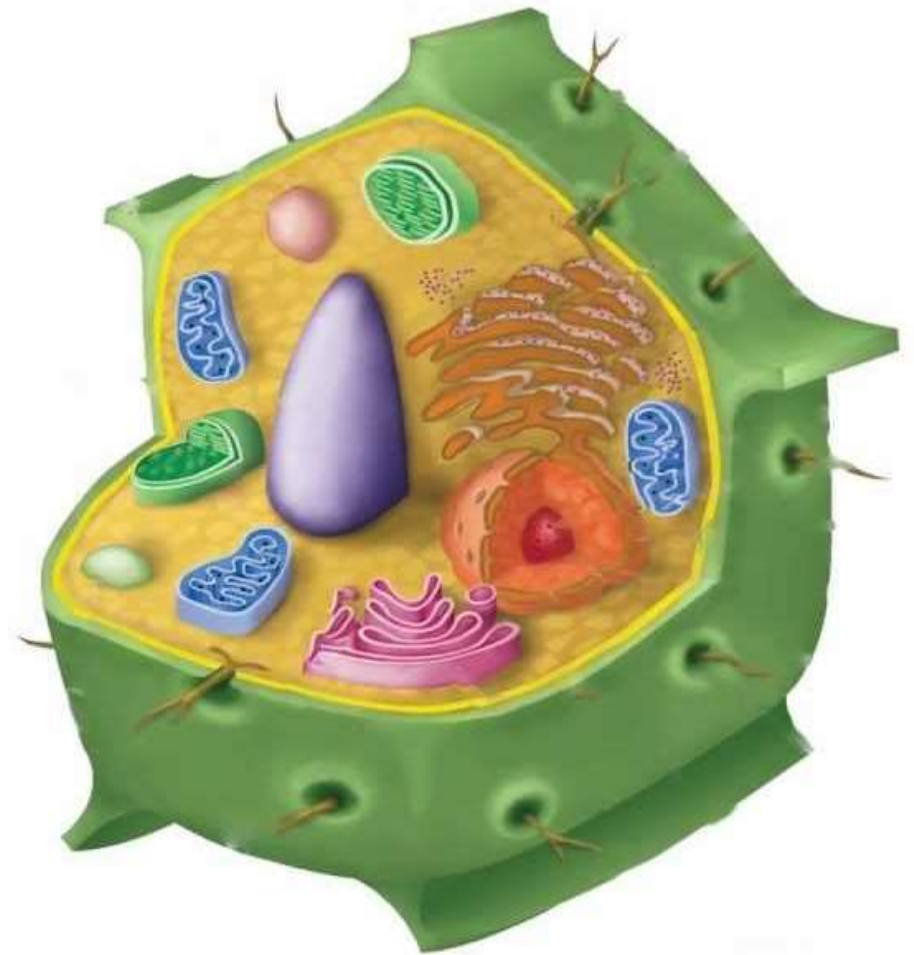


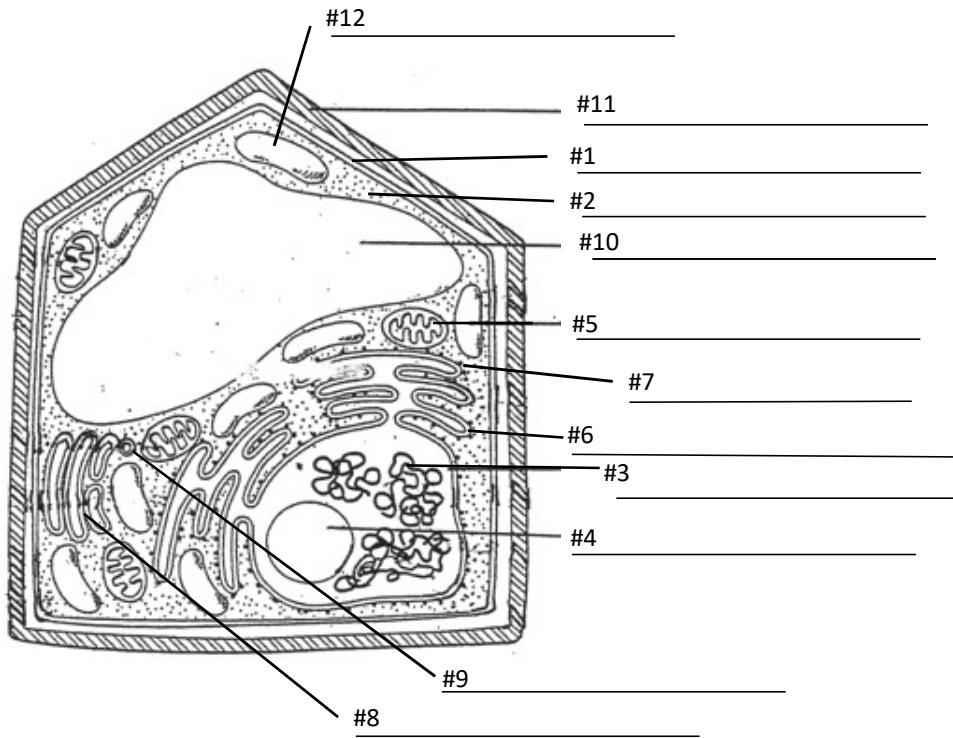
**Animal Cell**



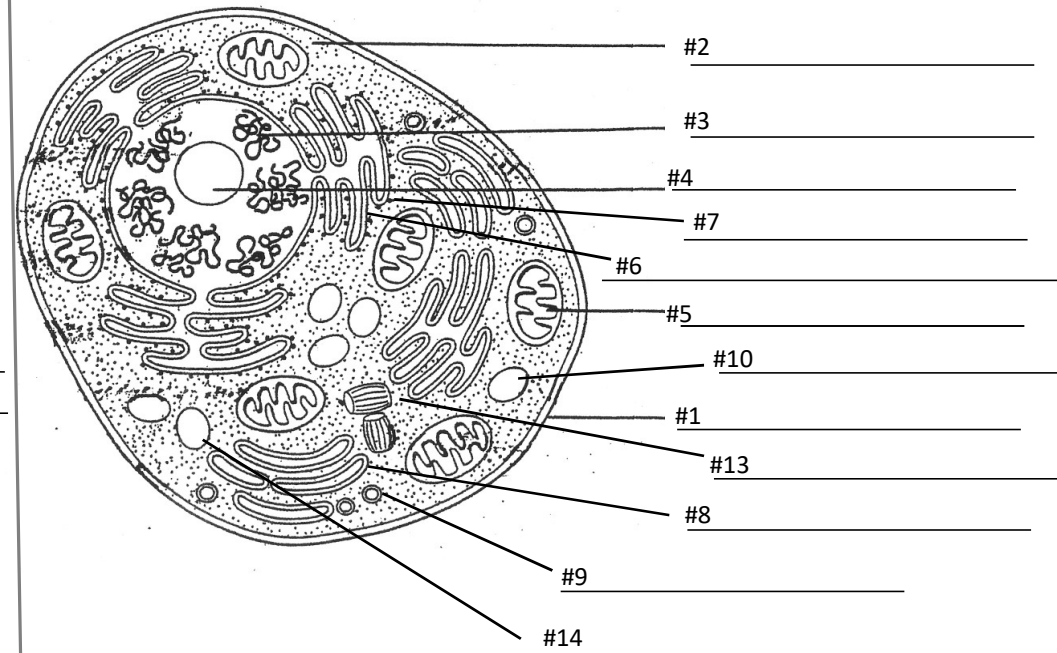
**Plant Cell**



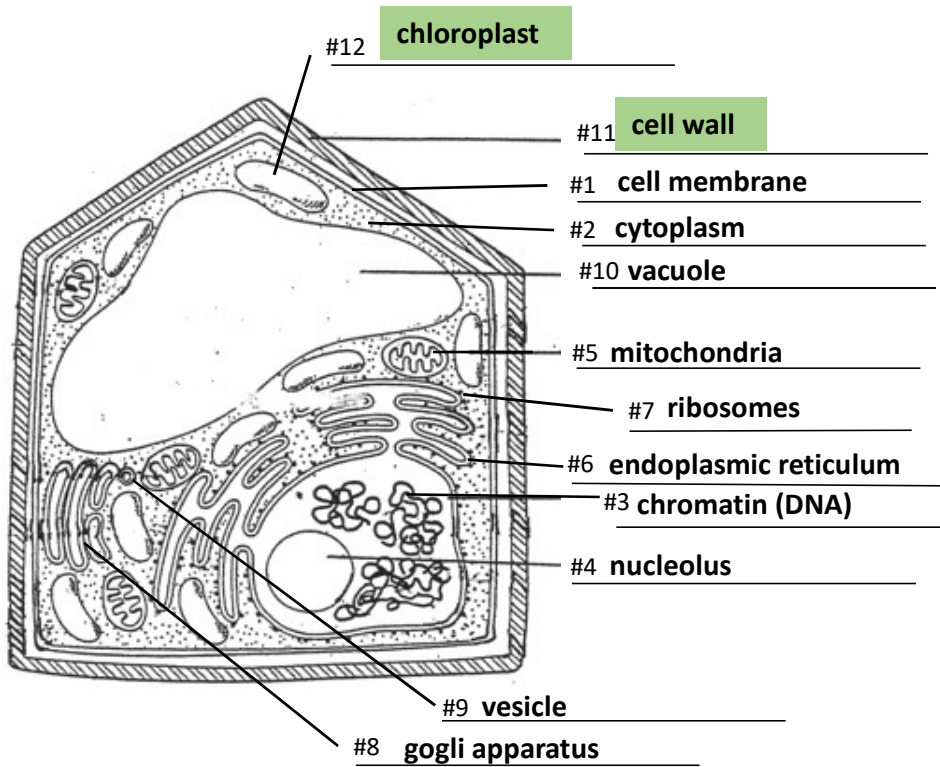
**Plant Cell**



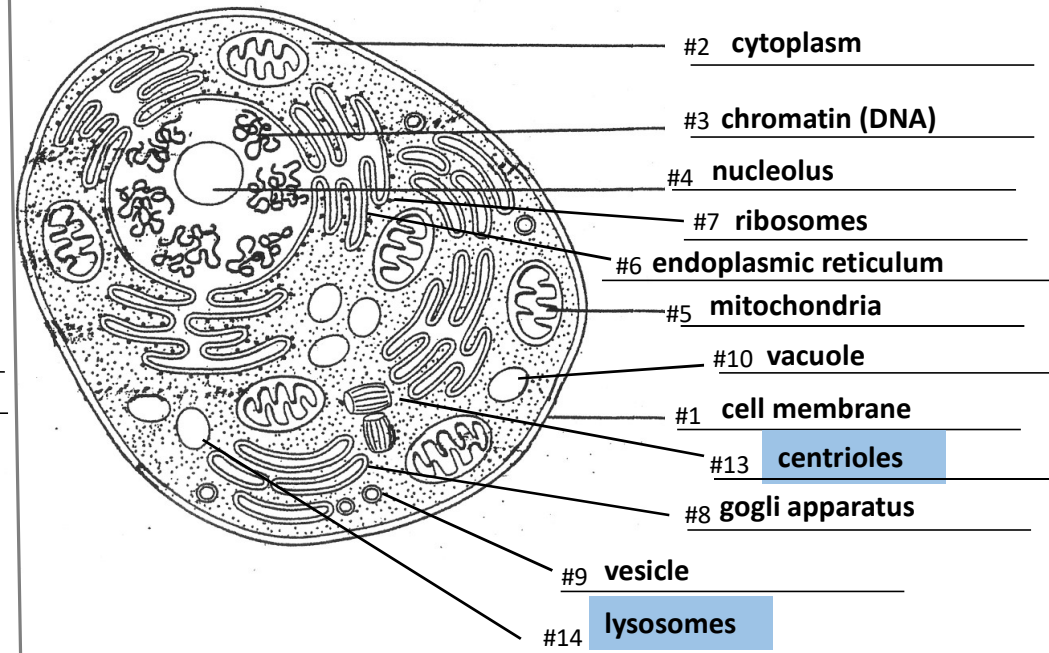
**Animal Cell**



## Plant Cell



## Animal Cell



<b>Cell Organelle</b>	<b>Animal or Plant</b>	<b>Function</b>
1. Cell Membrane	A & P	Selective barrier - controls the flow of material into and out of the cell
2. Cytoplasm	A & P	Contains cytosol and the organelles
Cytosol	A & P	The fluid material between the cell membrane and the nucleus
Cytoskeleton	A & P	Maintain cell structure
Nucleus	A & P	Controls all cell activities, contains chromatin & nucleolus
3. Chromatin	A & P	Genetic material or DNA
4. Nucleolus	A & P	Makes ribosomes
5. Mitochondria	A & P	Powerhouse or battery of cell

6. Endoplasmic Reticulum (general function)	A & P	Network of channels that transport materials made in the cell Always connected to the nucleus
Smooth ER	A & P	Help to make fat or lipid molecules
Rough ER	A & P	Have ribosomes attached and help in protein synthesis
7. Ribosomes	A & P	Make protein, attached to ER or free in the cytosol
8. Golgi Apparatus	A & P	Sorts and packages material to transport out of the cell
9. Vesicle	A & P	Sacs used to transport material out of the cell
10. Vacuole	A & P	Storage system of the cell - contains water and nutrients Plants - one large;    Animal - many small ones

11. Cell Wall	P	Tough rigid structure outside the cell membrane providing support to the cell
12. Chloroplast	P	Contains chlorophyll and is the site for photosynthesis
13. Centrioles	A	Involved in cell division
14. Lysosome	A	Contains many enzymes that break down molecules