

U5D9 Review Lesson shell

Saturday, November 18, 2017 12:36 PM

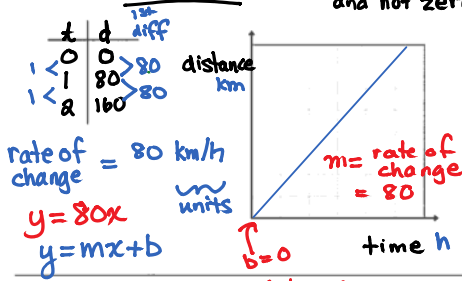


U5D9
Review Le...

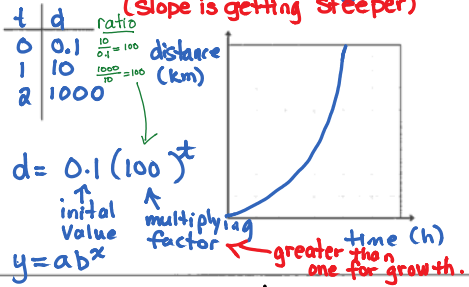
Summary: Rate of Change = $\frac{\text{rise}}{\text{run}}$

Compare distance-time graphs (for equal time intervals) for a car that is:

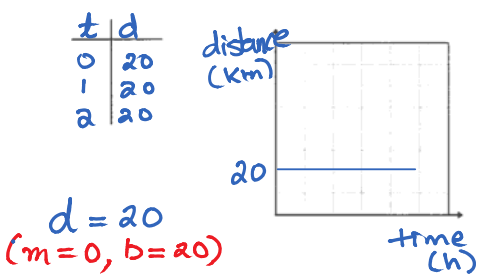
a) moving at a constant speed (slope) rate of change is **constant and not zero**



b) accelerating rate of change is **increasing (slope is getting steeper)**



c) stopped (eg. 20 km from home) (slope) rate of change is **zero (constant and zero)**



d) slowing down rate of change is **decreasing (slope is getting less steep)**

