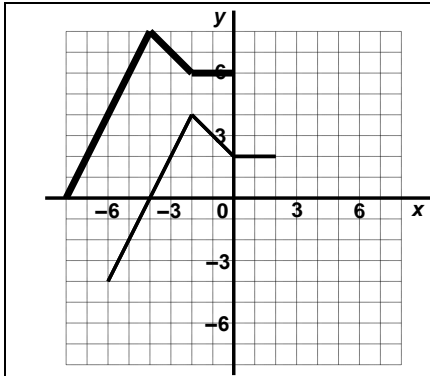
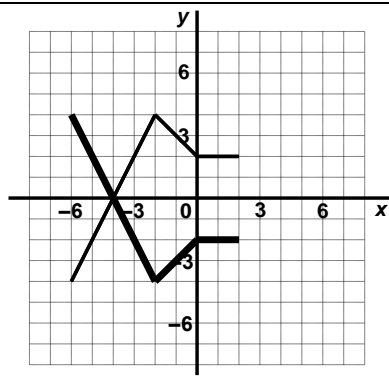


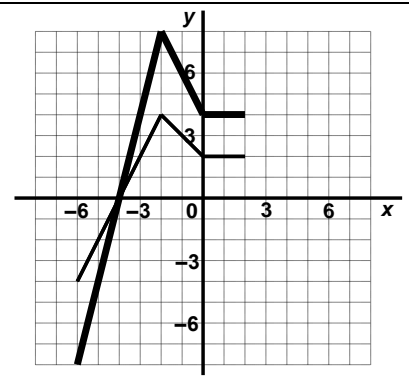
1. Give the correct function notation for the **HEAVY** lined object, given that the lighter object is  $y = f(x)$ .



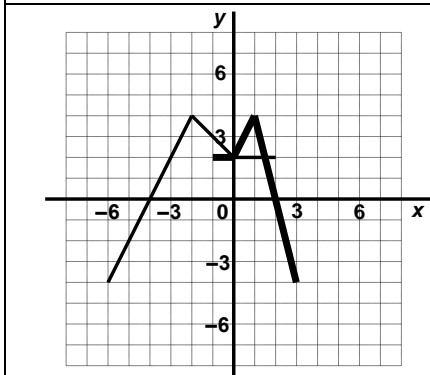
a.



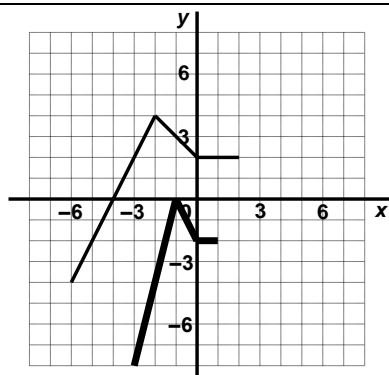
b.



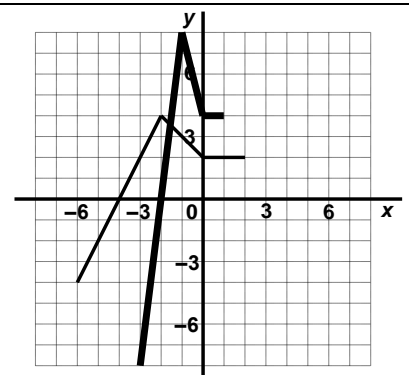
c.



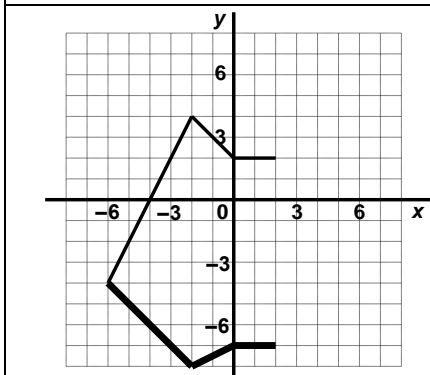
d.



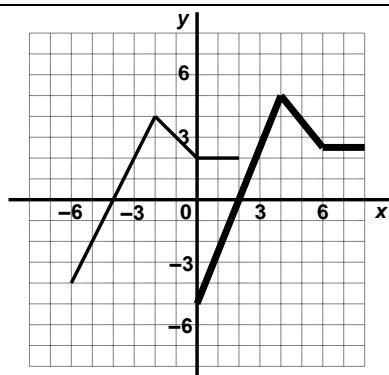
e.



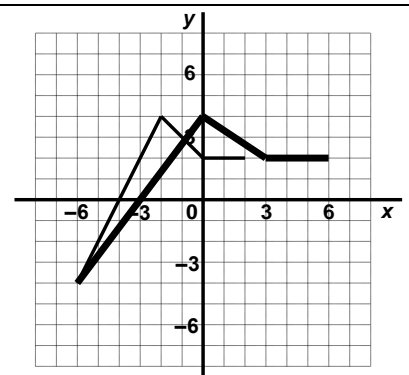
f.



g.



h.



i.

2. Describe how the graph of each of the following functions can be obtained from the graph of  $y=f(x)$ .

**HINT: STRETCH & REFLECT FIRST; SLIDE LAST.**

a)  $y = f(x-3)+2$

b)  $y = 4f(x)-7$

c)  $y = f(4(x-7))$

d)  $y = -\frac{1}{5}f(x)$

e)  $y = -f(x+6)$

f)  $y = f(-2x)+8$

g)  $y = -4f(-\frac{1}{3}x)$

h)  $y = 2f(3(x+4))+5$

i)  $y = \frac{3}{4}f(\frac{3}{4}x)-1$