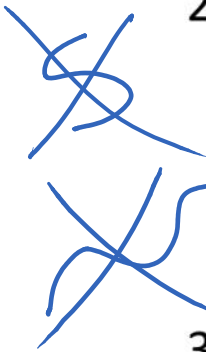


Some non-linear relations can be modeled using a CURVE of BEST FIT.

The CURVE OF BEST FIT should:

1. Follow the general trend of the data

2. Pass through as many points as possible while maintaining a SMOOTH curve



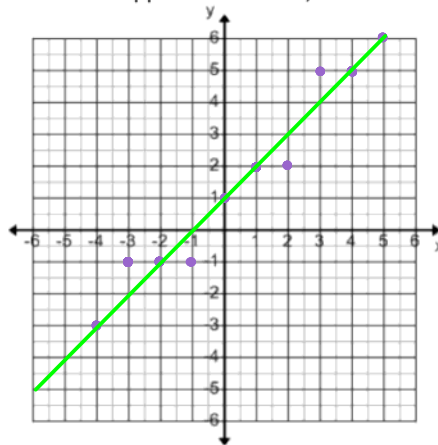
3. Have a roughly equal number of points above and below the curve as you look from left to right.



Example 1: Plot the following sets of points on a grid. If the points show a linear relationship, draw a line of best fit. If the relation appears non-linear, sketch a curve of best fit.

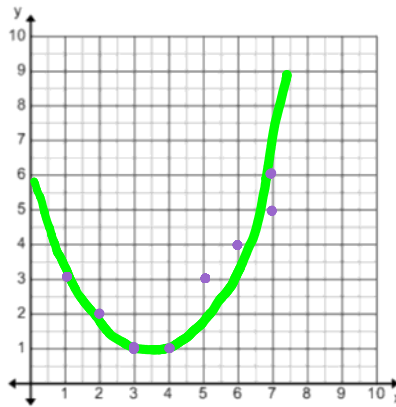
a)

X	Y
-4	-3
-3	-1
-2	-1
-1	-1
0	1
1	2
2	2
3	5
4	5
5	6



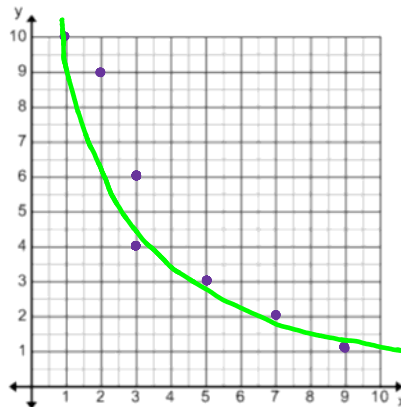
b)

X	Y
4	1
3	1
6	4
5	3
2	2
7	5
1	3
7	6



c)

X	Y
1	10
2	9
3	6
3	4
5	3
7	2
9	1



EXPLORE DESMOS.